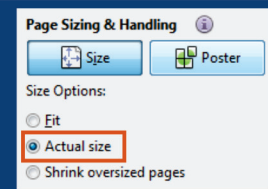


NOTE: Print this map at correct size to get the correct answers. If you do not print the map at the actual size, you will get the wrong answers.

How to print this map at the Actual Size:

Open the Print dialog box: select Actual size under Page Sizing & Handling. →



Activity 5 Construct cross-sections

Refer to **FIGURE A** and answer the following questions.

- 1 What is the contour interval of the map? (1)
 - 2 Calculate the scale of the map and give it as a ratio scale. (4)
 - 3 Draw a cross-section (A–B) for each of the following vertical scales:
 - a Where 1 cm represents 20 m (6)
 - b Where 1 cm represents 40 m (6)
 - c Where 1 cm represents 100 m. (6)
 - 4 Calculate the vertical exaggeration for each cross-section. (12)
- [35]

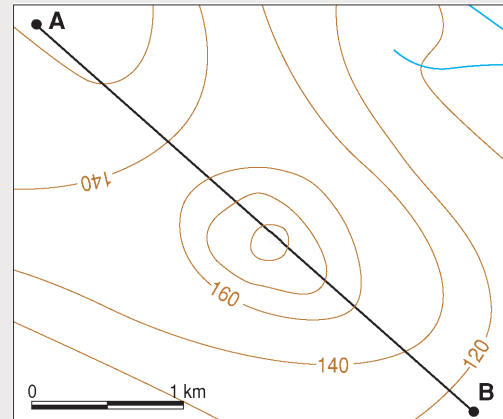
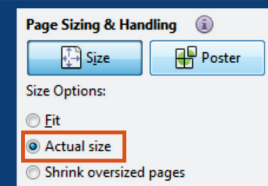


FIGURE A

NOTE: Print this map at correct size to get the correct answers. If you do not print the map at the actual size, you will get the wrong answers.

How to print this map at the Actual Size:

Open the Print dialog box: select Actual size under Page Sizing & Handling. →



Activity 7 Calculate gradient

Refer to **FIGURE A**.

Calculate the gradient between:

A and C

B and C.

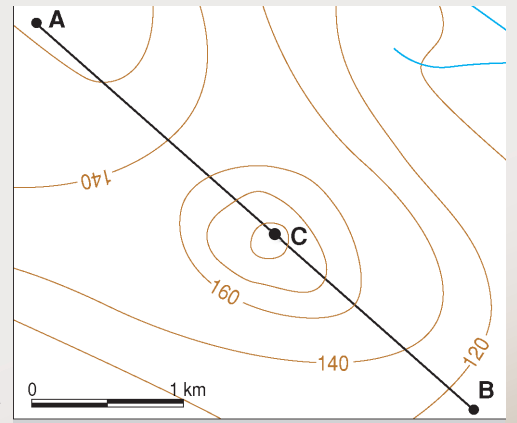
(Remember that you will have to interpret the contours to determine the heights of A, B and C.)

$$4 \times 2 = (8)$$

$$4 \times 2 = (8)$$

[16]

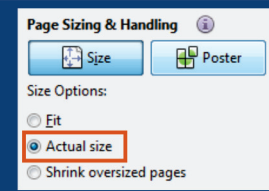
FIGURE A



NOTE: Print this map at correct size to get the correct answers. If you do not print the map at the actual size, you will get the wrong answers.

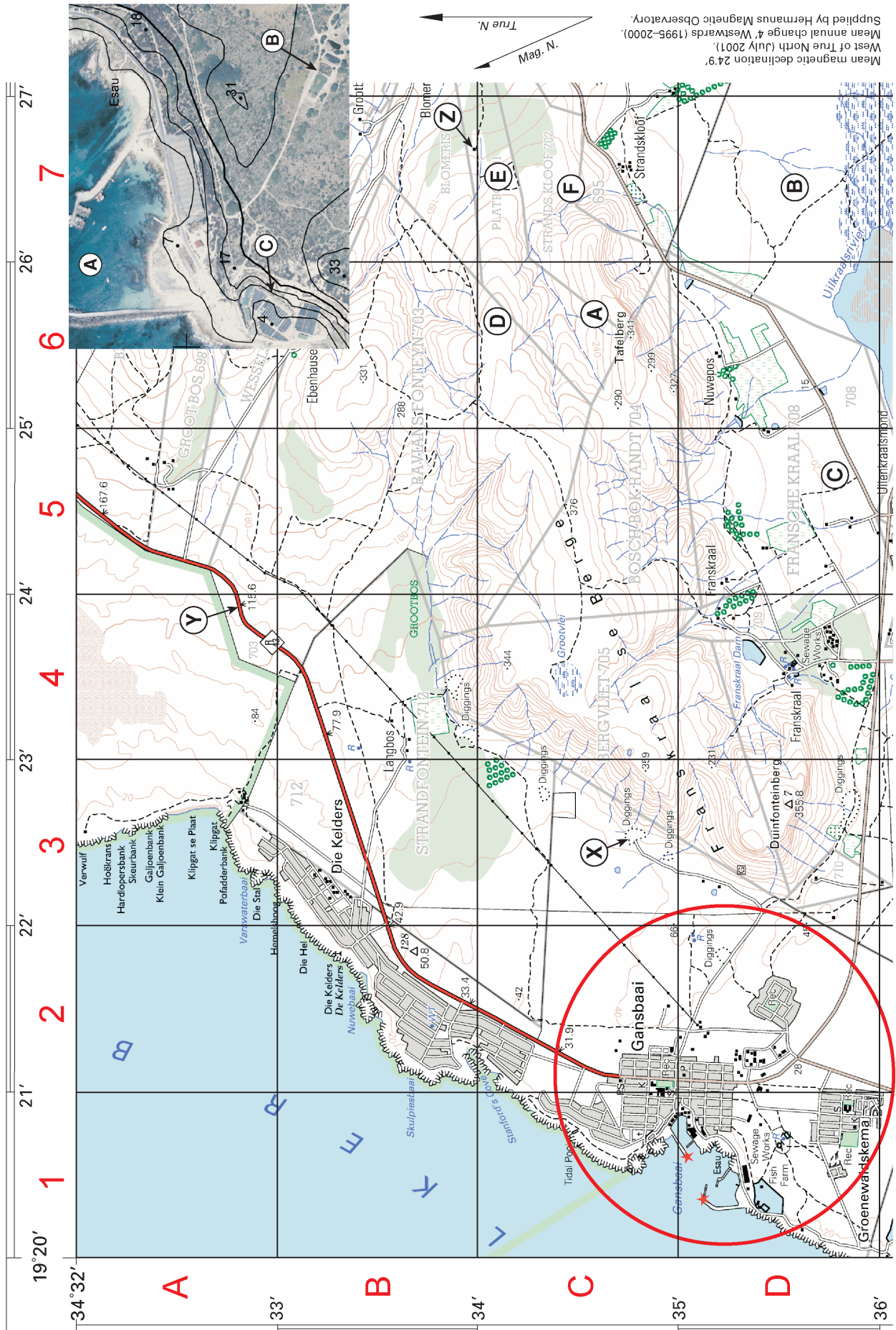
How to print this map at the Actual Size:

Open the Print dialog box: select Actual size under Page Sizing & Handling.



SCALE 1:50 000

EXTRACT FROM 3419CB GANSBAAI



NOTE: Print this map at correct size to get the correct answers. If you do not print the map at the actual size, you will get the wrong answers.

How to print this map at the Actual Size:

Open the Print dialog box: select Actual size under Page Sizing & Handling.



Page Sizing & Handling

Size

Poster

Size Options:

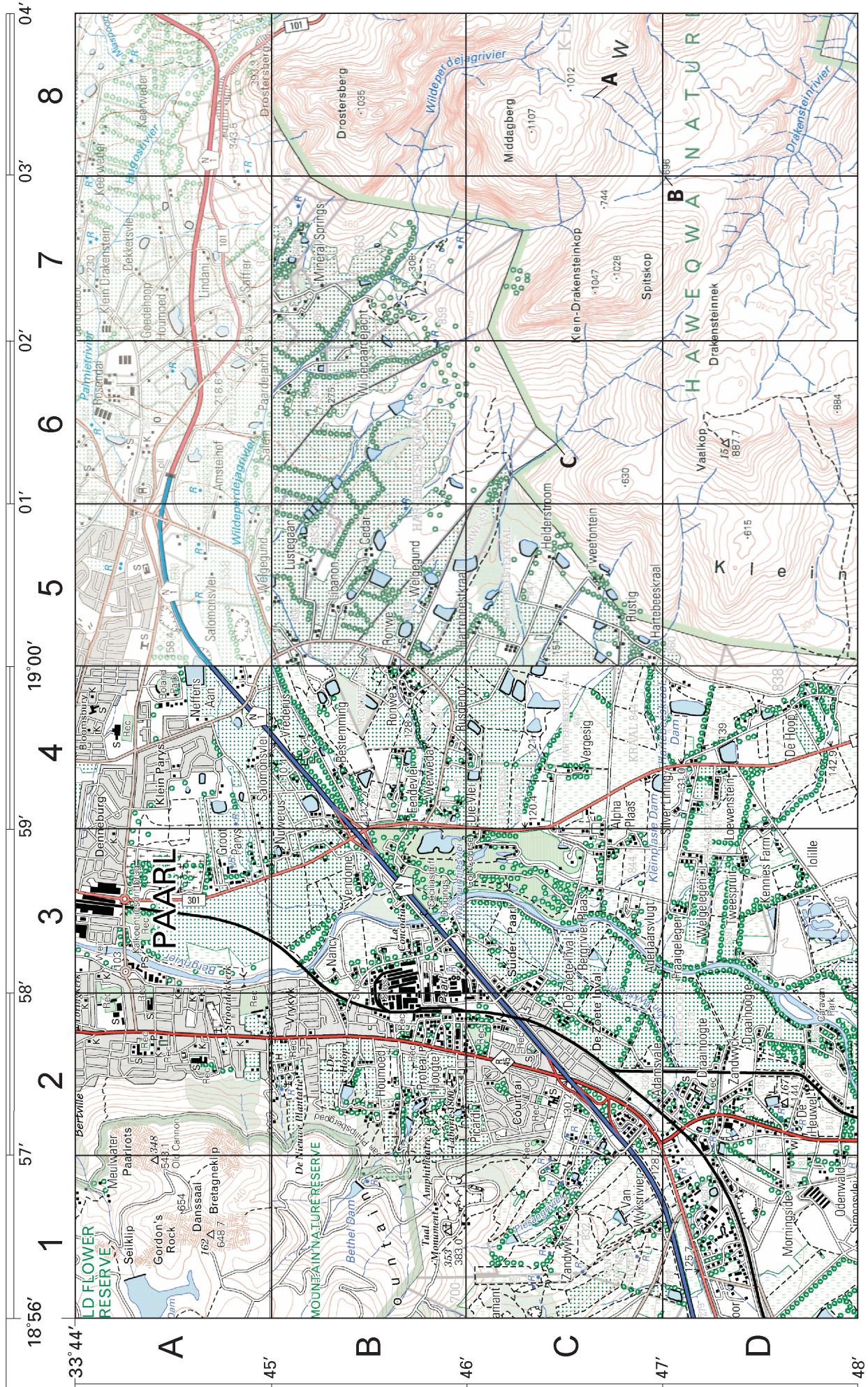
Fit

Actual size

Shrink oversized pages

SCALE 1:50 000

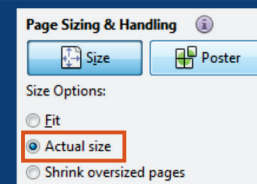
Extracts of topographic maps 3318DB + DD and 3319CA + CC PAARL



NOTE: Print this map at correct size to get the correct answers. If you do not print the map at the actual size, you will get the wrong answers.

How to print this map at the Actual Size:

Open the Print dialog box: select Actual size under Page Sizing & Handling. →

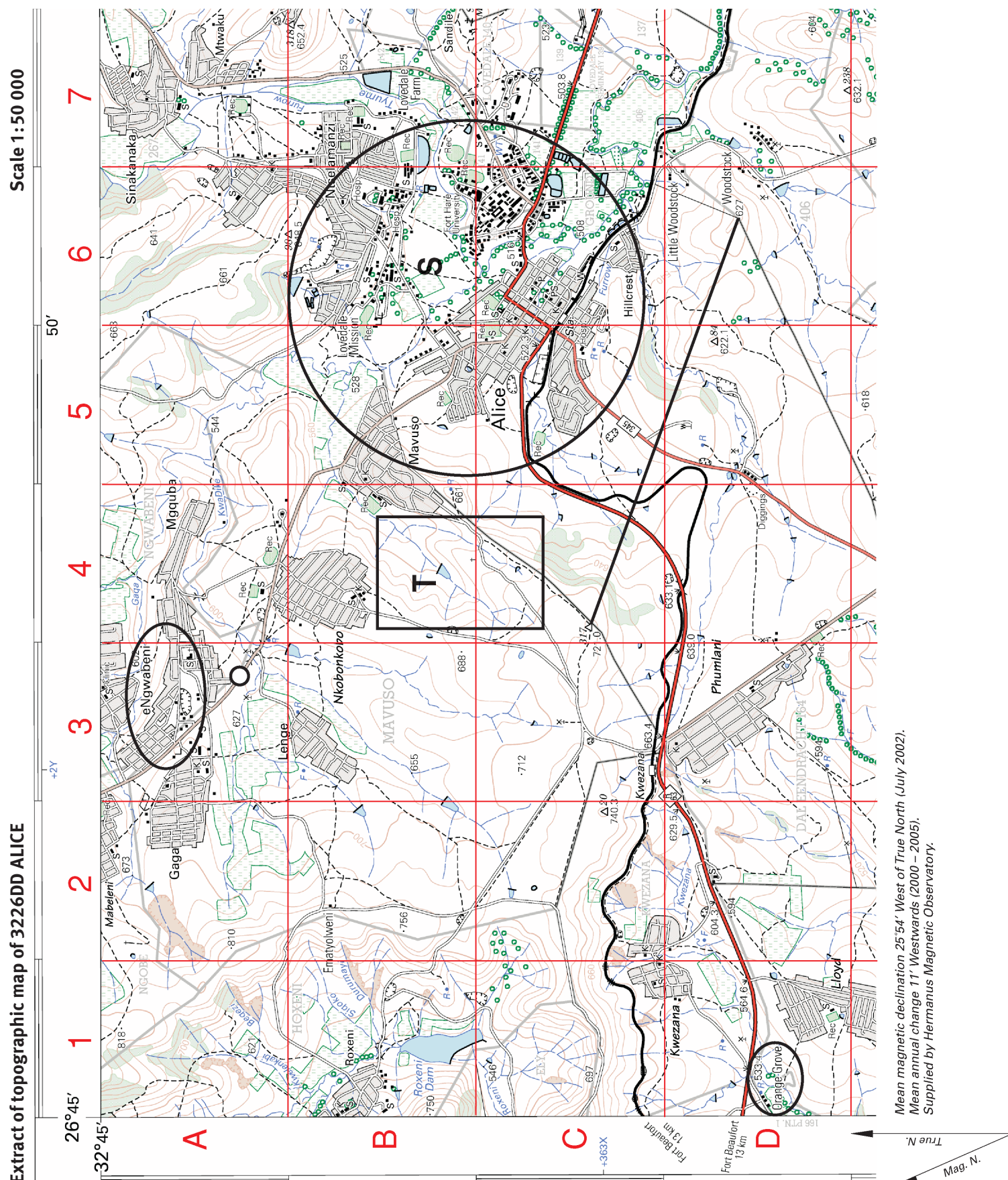


Orthophoto map 3318DB 25 PAARL



How to print this map at the Actual Size:
Open the Print dialog box: select Actual size under Page Sizing & Handling. ➡

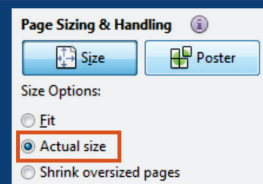
Our Teachers. Our Future



NOTE: Print this map at correct size to get the correct answers. If you do not print the map at the actual size, you will get the wrong answers.

How to print this map at the Actual Size:

Open the Print dialog box: select Actual size under Page Sizing & Handling. →



SCALE 1:10 000

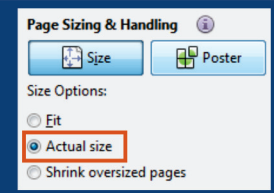
EXTRACT FROM 3320 CC 3 MONTAGU



NOTE: Print this map at correct size to get the correct answers. If you do not print the map at the actual size, you will get the wrong answers.

How to print this map at the Actual Size:

Open the Print dialog box: select Actual size under Page Sizing & Handling.



SCALE 1:50 000

EXTRACT FROM 3320 CC MONTAGU

