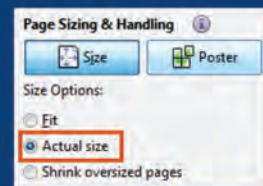


NOTE: Print this map at correct size to get the correct answers. If you do not print the map at the actual size, you will get the wrong answers.

How to print this map at the Actual Size:

Open the Print dialog box: select Actual size under Page Sizing & Handling. →

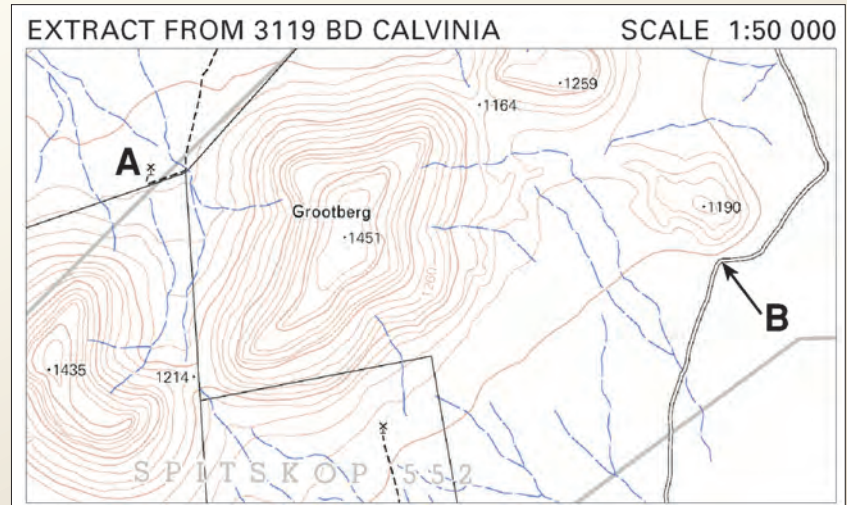


Activity 3 Draw a cross-section

- Draw a cross-section from the windmill at A to B as marked on the map in **FIGURE A**.
- Use a vertical scale of 1 cm represents 100 m.

Show the position of all geographic features on the cross-section.
Add all appropriate labels and captions.

FIGURE A Extract from 1:50 000 topographic map Calvinia 3119BD



NOTE: Print this map at correct size to get the correct answers. If you do not print the map at the actual size, you will get the wrong answers.

How to print this map at the Actual Size:

Open the Print dialog box: select Actual size under Page Sizing & Handling. →

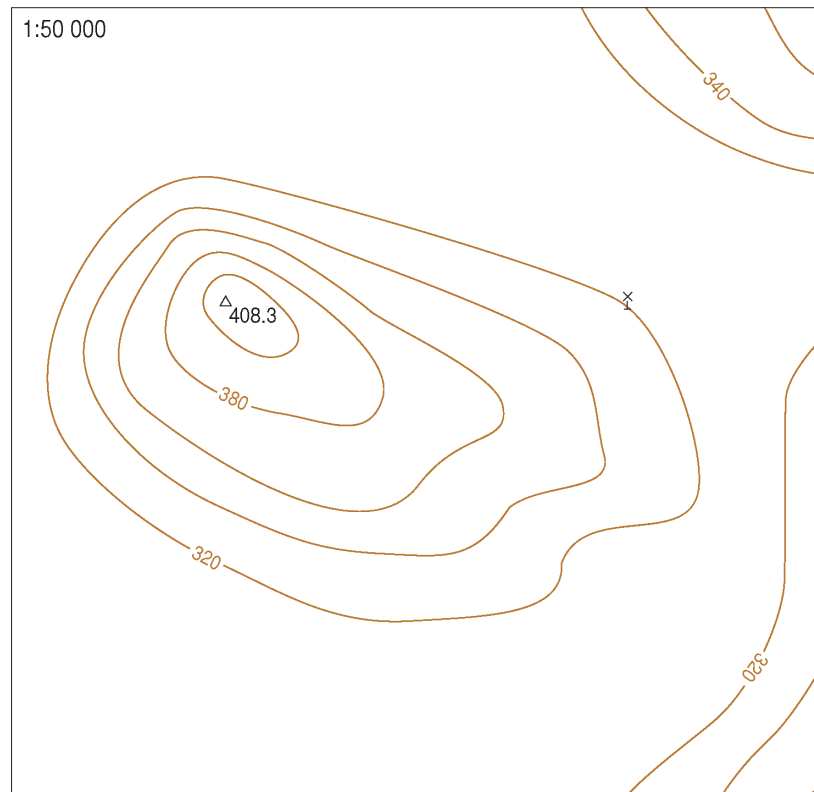
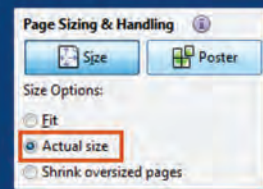
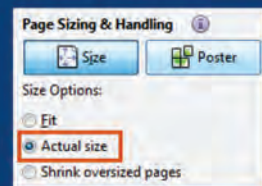


FIGURE 15 Contour map from which to calculate gradient

NOTE: Print this map at correct size to get the correct answers. If you do not print the map at the actual size, you will get the wrong answers.

How to print this map at the Actual Size:

Open the Print dialog box: select Actual size under Page Sizing & Handling. →



Skills file

- 1 Use the co-ordinates of the orthophoto map and find the corresponding co-ordinates on the topographic map.

EXTRACT FROM 3419 CB 8 DIE KELDERS

SCALE 1:10 000

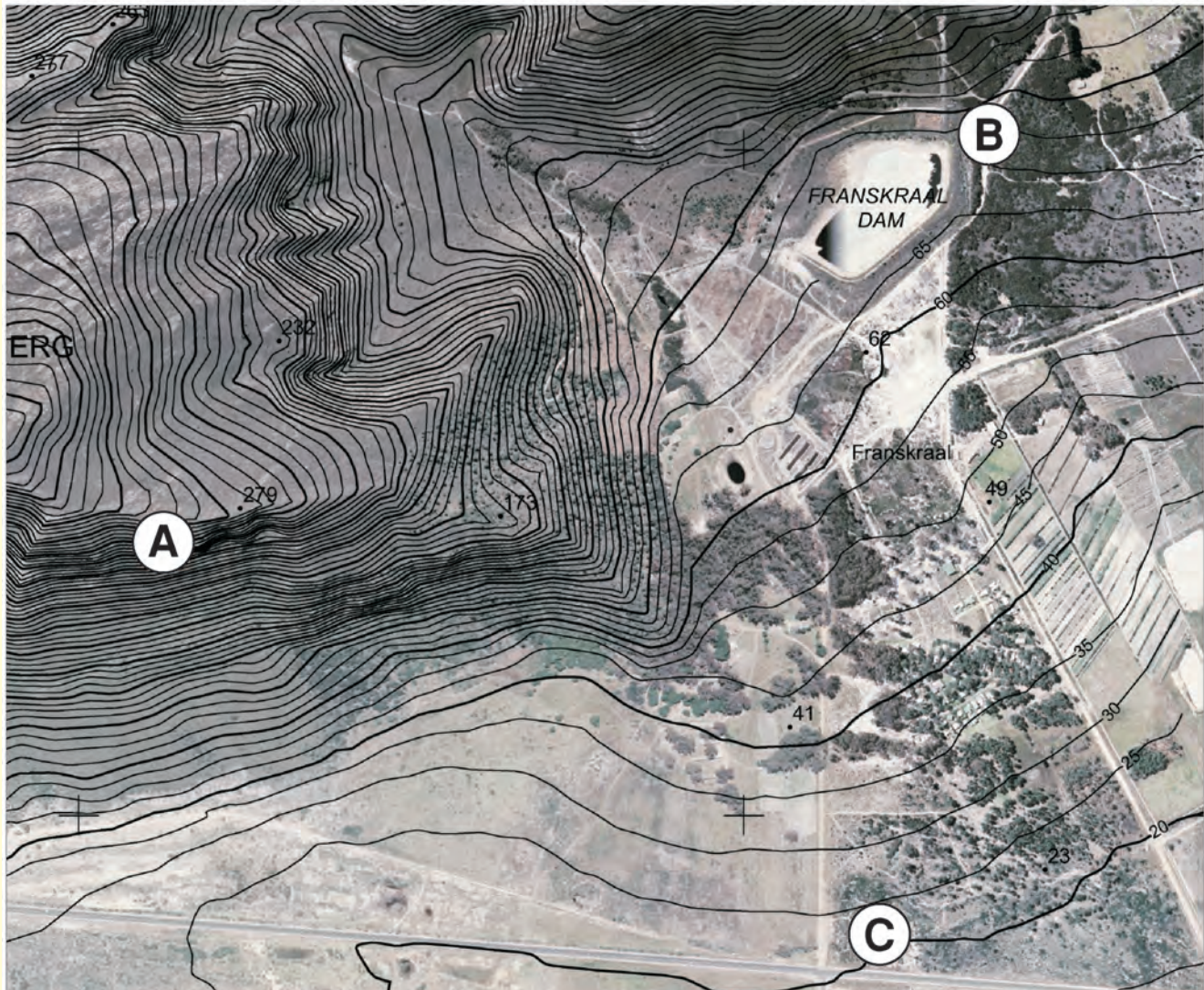
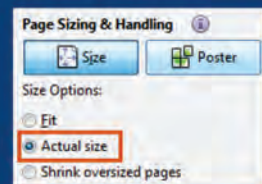


FIGURE 26 Extract of 1:10 000 orthophoto map 3419 CB 8 DIE KELDERS showing three marked points

NOTE: Print this map at correct size to get the correct answers. If you do not print the map at the actual size, you will get the wrong answers.

How to print this map at the Actual Size:

Open the Print dialog box: select Actual size under Page Sizing & Handling. →



Skills file continued

- 2 Identify and compare prominent features and objects common to both the orthophoto map and the topographic map. Look for the following:
- natural features such as rivers and landforms
 - infrastructure such as roads, airfields, railway lines and power lines
 - buildings such as houses, shopping centres and factories
 - land use such as industry and forestry.

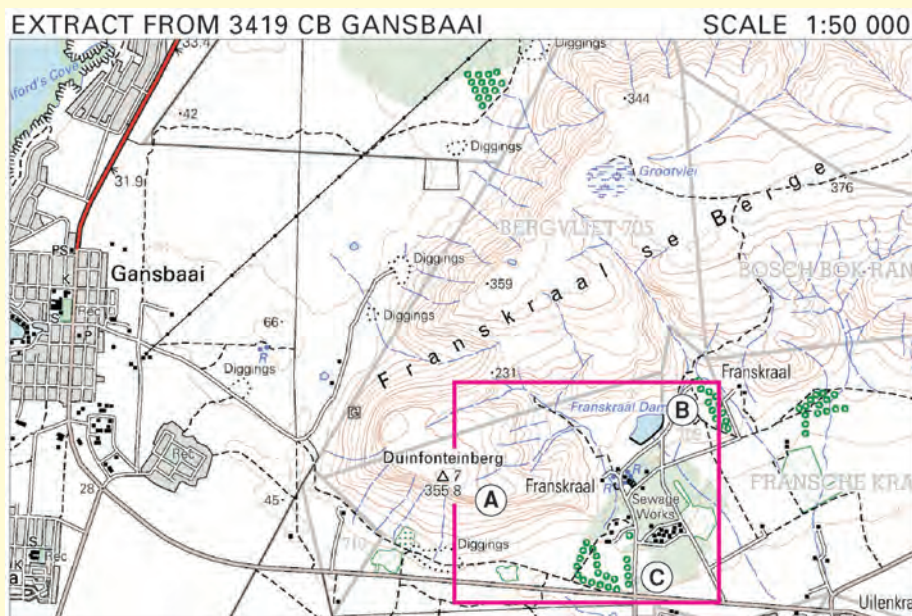


FIGURE 27 GANSBAAI topographic map extract, showing corresponding points marked in Figure 26

To orient the DIE KELDERS orthophoto map (**FIGURE 26**) with the GANSBAAI topographic map (**FIGURE 27**), identify the following features that appear on both maps:

- a the ridge east of the trigonometrical beacon 7
- b the Franskraal Dam
- c the secondary road and the T-junction with the road leading to Franskraal Dam.

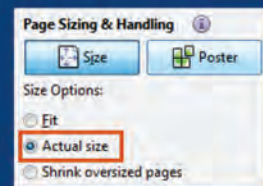
Identify the exact boundaries of the orthophoto map.

Orienting the aerial photograph or orthophoto map with the topographic map is important. They are of very little value as a map supplement if their location and orientation are not known.

NOTE: Print this map at correct size to get the correct answers. If you do not print the map at the actual size, you will get the wrong answers.

How to print this map at the Actual Size:

Open the Print dialog box: select Actual size under Page Sizing & Handling. →



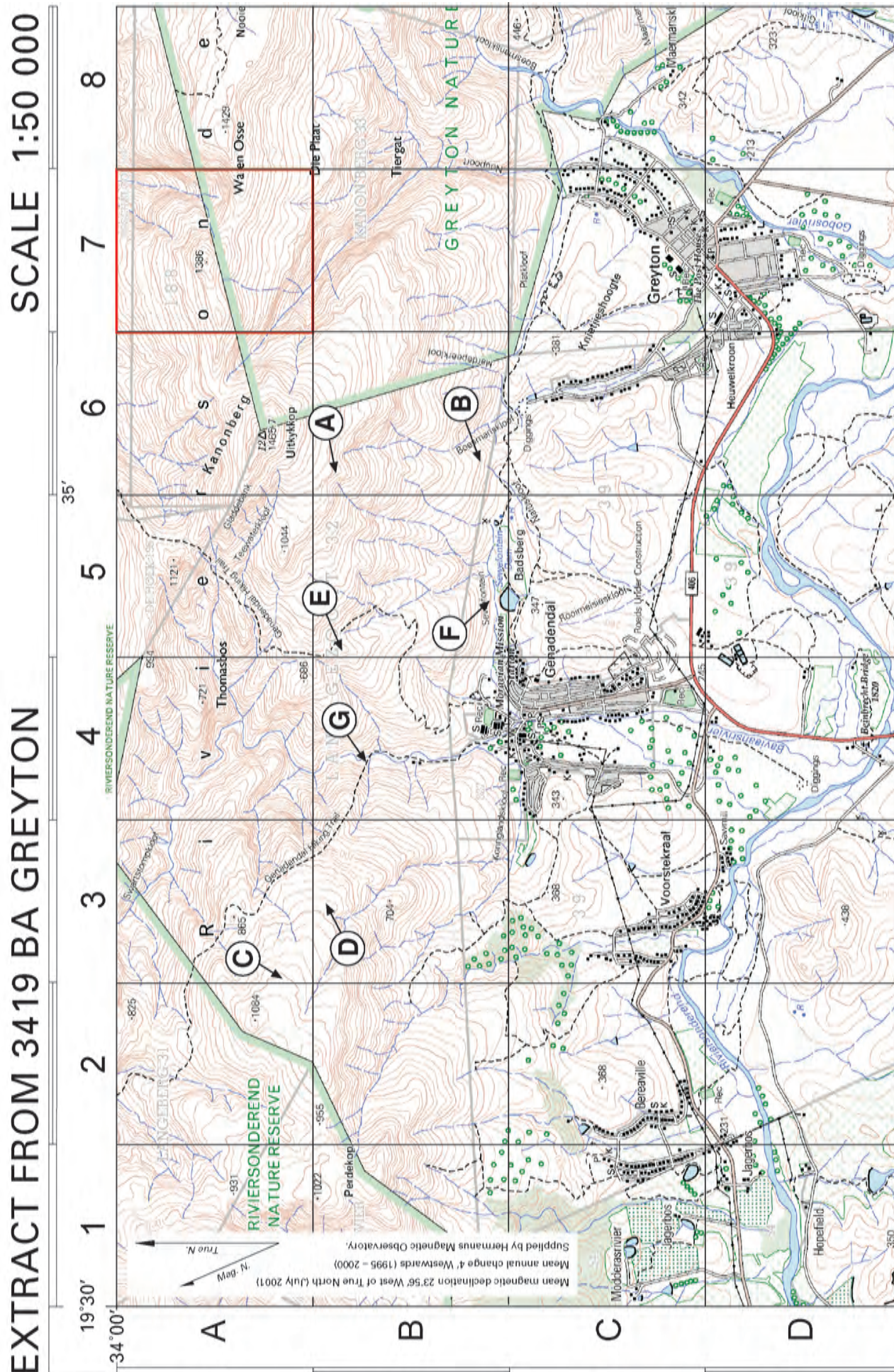
Activity 8 Interpret a colour aerial photograph

- 1 Study the extract from the Franschhoek aerial photograph in **FIGURE A** below thoroughly.
- 2 Use your direct recognition and logical deduction skills to interpret the photograph and identify the features labelled (A) to (J).
- 3 Give reasons for each of your answers.



FIGURE A Extract from the colour aerial photograph of Franschhoek

Open the Print dialog box: select Actual size under Page Sizing & Handling.



NOTE: Print this map at correct size to get the correct answers. If you do not print the map at the actual size, you will get the wrong answers.

How to print this map at the Actual Size:

Open the Print dialog box: select Actual size under Page Sizing & Handling.

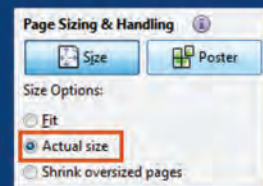
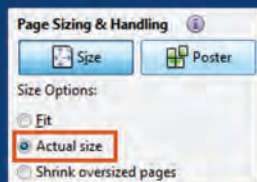


FIGURE A Aerial photograph of Paarl 3318DB

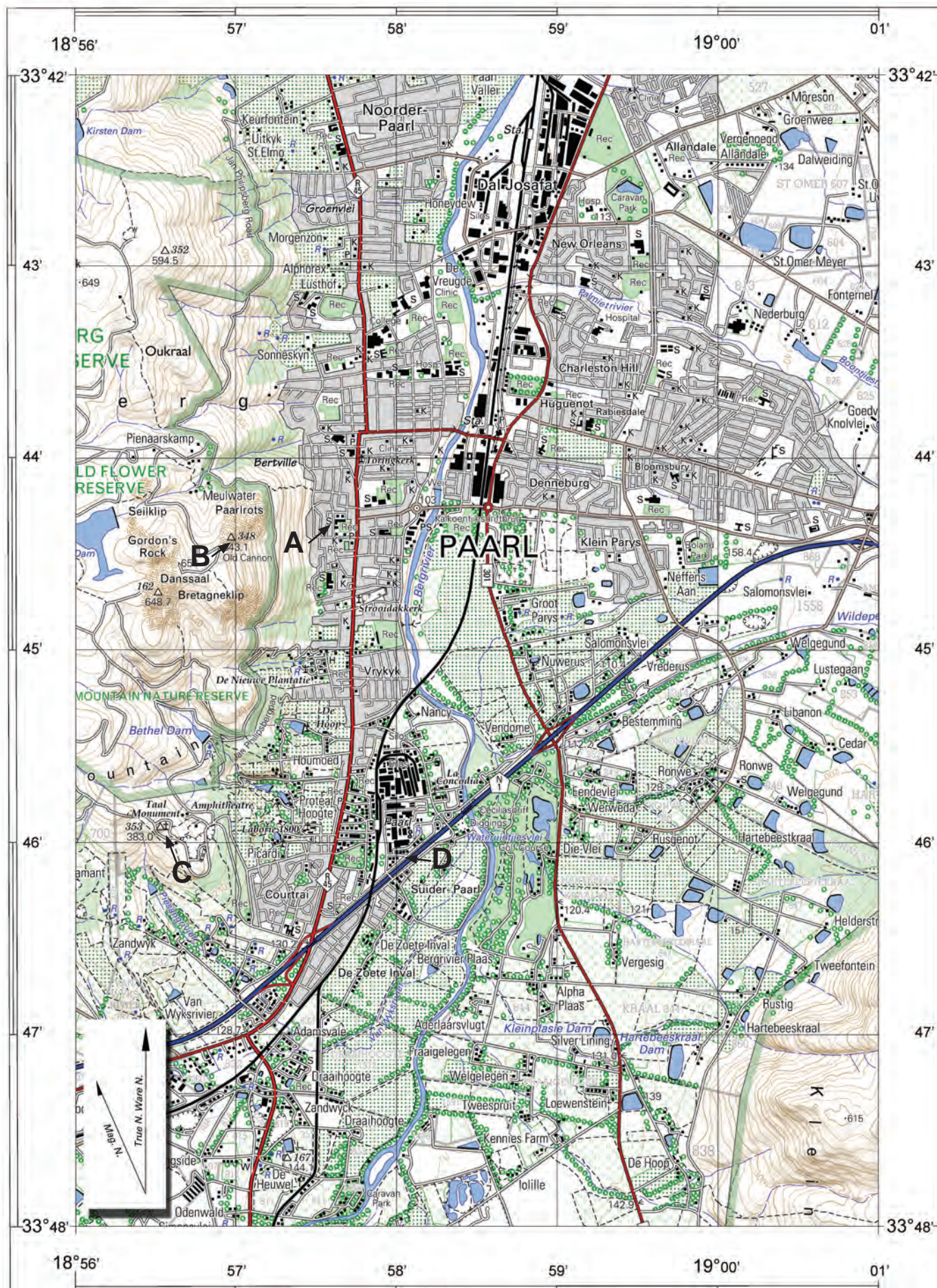
NOTE: Print this map at correct size to get the correct answers. If you do not print the map at the actual size, you will get the wrong answers.

How to print this map at the Actual Size:

Open the Print dialog box: select Actual size under Page Sizing & Handling. →



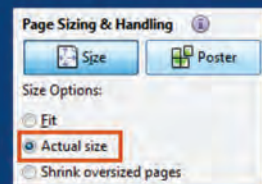
1:50 000 extract of 3318 DB, DD, 3319 CA and CC PAARL



NOTE: Print this map at correct size to get the correct answers. If you do not print the map at the actual size, you will get the wrong answers.

How to print this map at the Actual Size:

Open the Print dialog box: select Actual size under Page Sizing & Handling. →



Questions

- 1 Study the topographic map of Wuppertal in **FIGURE A** below and then answer the questions that follow.
 - a Name the economic activity at A. Give a reason for your answer. 2×2=(4)
 - b What are people producing at A? (Hint: refer to page 181.) 1×2=(2)
 - c The farming community of Wuppertal has fair trade status. What does this mean? 2×2=(4)
 - d List TWO benefits of fair trade to producers at A. 2×2=(4)
 - e Give the exact location (degrees, minutes and seconds) of A and B. 2×2=(4)
 - f Calculate the distance in kilometres of the secondary road on the map. (4)
 - g Calculate the magnetic bearing between spot height 850 and A. (6)
 - h Calculate the area of the topographic map extract. Give your answer in km². (6)
- [34]

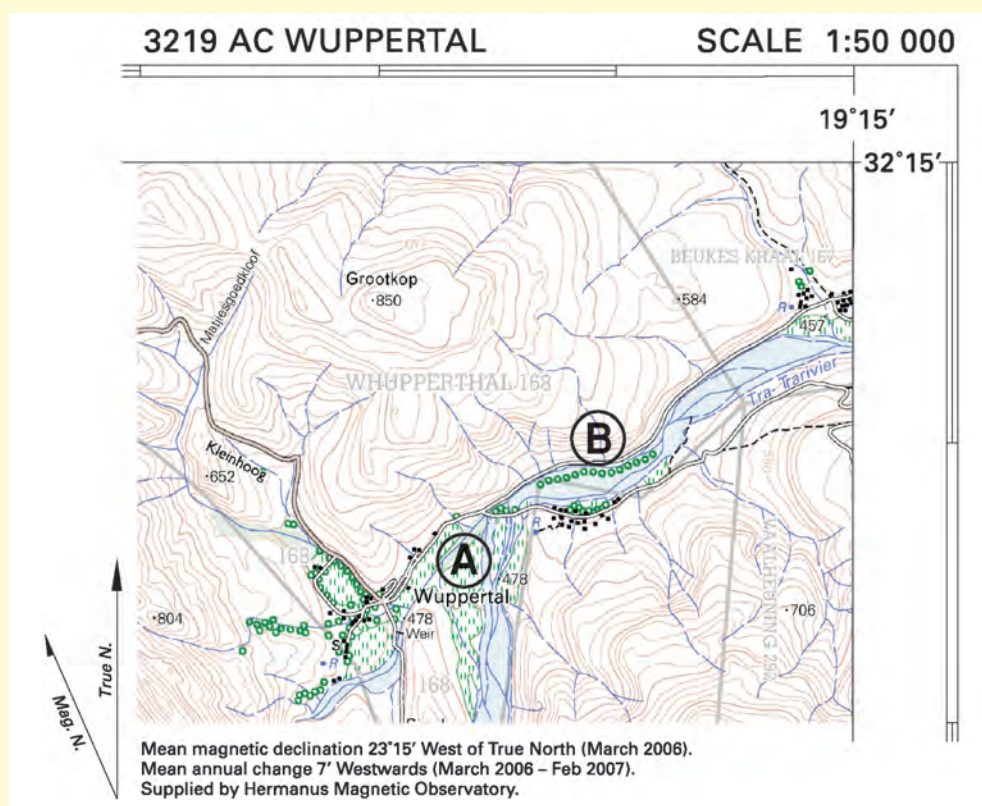


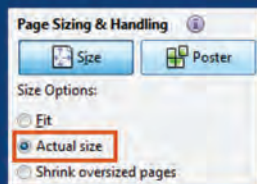
FIGURE A Extract of topographic map 3219 AC Wuppertal

- 2 Choose the correct option in the following sentences.
 - a Aid is the transfer of resources from a **richer / poorer** country to a **richer / poorer** country.
 - b Aid that is from an agreement between two countries is known as **bilateral / multilateral** aid.
 - c The International Monetary Fund, United Nations and World Bank are regular donors of **bilateral / multilateral** aid.

NOTE: Print this map at correct size to get the correct answers. If you do not print the map at the actual size, you will get the wrong answers.

How to print this map at the Actual Size:

Open the Print dialog box: select Actual size under Page Sizing & Handling. →



2628AA JOHANNESBURG

SCALE 1:50 000

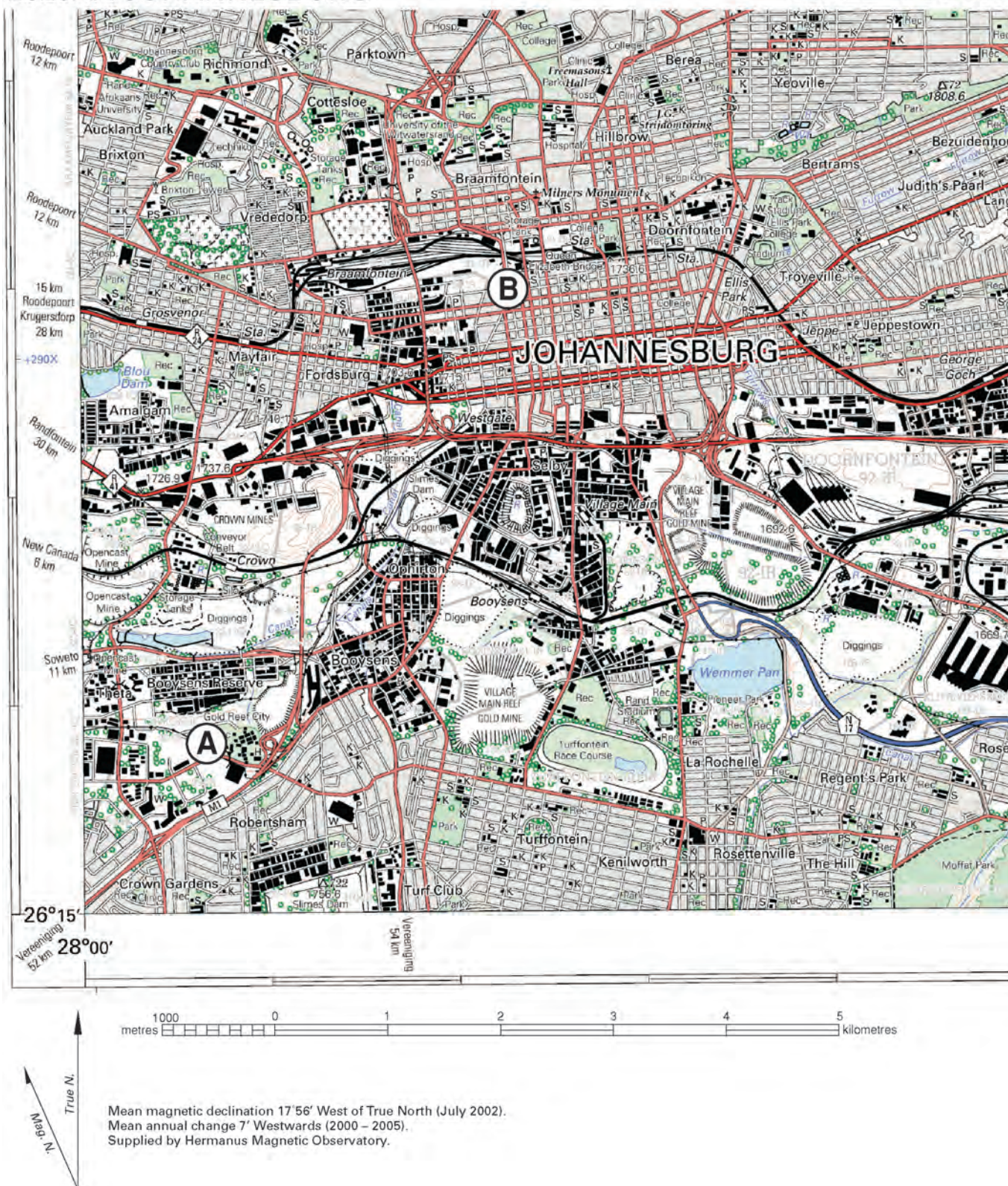
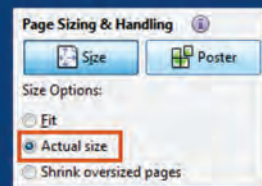


FIGURE B Topographic map 2628AA Johannesburg

NOTE: Print this map at correct size to get the correct answers. If you do not print the map at the actual size, you will get the wrong answers.

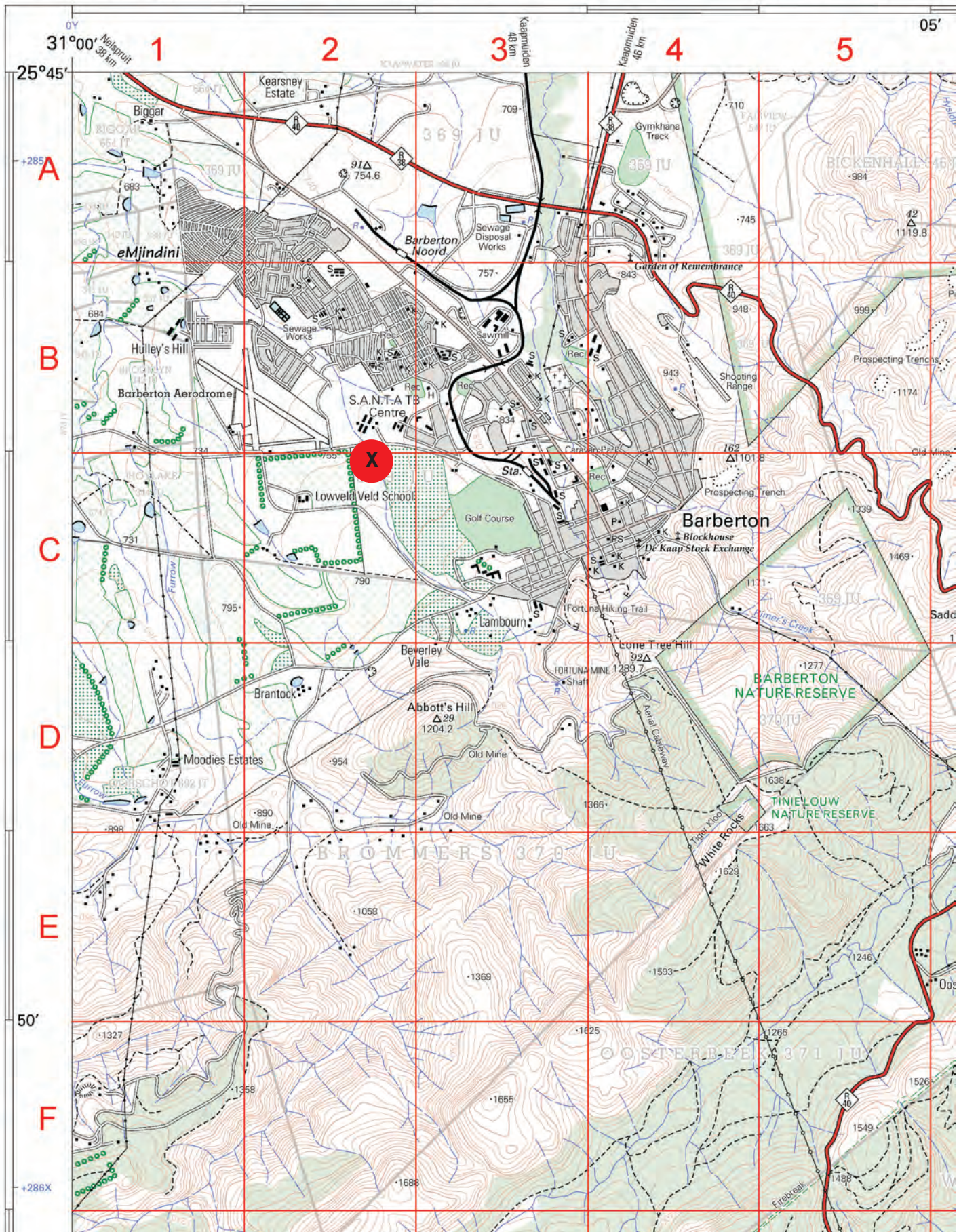
How to print this map at the Actual Size:

Open the Print dialog box: select Actual size under Page Sizing & Handling. →



EXTRACT FROM 2531 CC BARBERTON

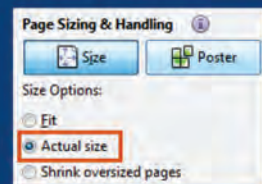
SCALE 1:50 000



NOTE: Print this map at correct size to get the correct answers. If you do not print the map at the actual size, you will get the wrong answers.

How to print this map at the Actual Size:

Open the Print dialog box: select Actual size under Page Sizing & Handling. →



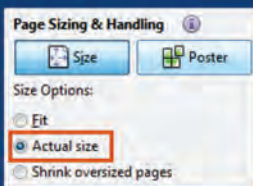
EXTRACT FROM 3420 CA 1 BREDASDORP 1:10 0000 ORTHOPHOTO



NOTE: Print this map at correct size to get the correct answers. If you do not print the map at the actual size, you will get the wrong answers.

How to print this map at the Actual Size:

Open the Print dialog box: select Actual size under Page Sizing & Handling. →



EXTRACT FROM 3420 CA BREDASDORP

SCALE 1:50 000

